

OUR FARM ANIMALS

We have a mix of horses, ponies, sheep and goats on our land. We don't rehome our older farm residents who have lived here for a number of years and who are with us because they have health problems but we do rehome some of the farm animals if someone is able to provide the right home for them.

If you are interested in rehoming any of our farm animals you need to speak with the sanctuary manager about it. As with all other animal enquiries we are open 11am-3pm 7 days a week.

EXOTICS

Now and again we may have an exotic animal looking for a home but we will always need a home to be experienced with the particular type of exotic and cannot consider a first time owner as they are very specialized.

Please ask at reception if you are looking to help find a home for an exotic animal in our care.

IF YOU CAN'T HAVE AN ANIMAL OF YOUR OWN

If you are not in a position to have an animal of your own because maybe you work long hours, live in rented accommodation or if you want to get some experience with a certain type of animal before you take one on why not come and volunteer at Animal Care.

Ask at reception for more details.



Animal Care

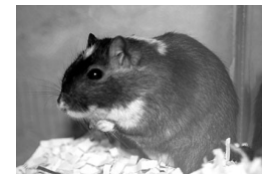
Blea Tarn Rd, Scotforth
Lancaster, LA2 0RD
Open to the public 11am-3pm

Phone: 01524 65495 Fax: 01524 841819
E-mail: vanessa@animalcare-lancaster.co.uk
Web www.animalcare-lancaster.co.uk
Leaflet Amended Nov 2006



ANIMAL CARE

ARE YOU THINKING OF ADOPTING AN ANIMAL FROM US?



Open 11am-3pm

Phone: 01524 65495

E-mail: vanessa@animalcare-lancaster.co.uk
Web www.animalcare-lancaster.co.uk

CAT/KITTEN ADOPTION PROCESS

- ?? Do you live within approximately 30 miles of our sanctuary in Scotforth, Lancaster?
- ?? Can you offer a safe, happy lifelong home to a cat?
- ?? Will you provide ongoing veterinary and training needs for a cat?

If you can answer yes to the above questions, you should visit our sanctuary any day (including weekends) between 11am-3pm and have a look at our cats.

HOW TO ADOPT A CAT FROM ANIMAL CARE

Once you see a cat you may like to give a home to, you need to fill in a questionnaire. The questionnaire isn't a test, it is just to ensure we match the right owner to the right cat. Staff are available to help with this.

A member of staff will then talk to you about the cat and its needs and they will ask you to spend some time with the cat if they feel it is a possible match for your lifestyle.

After spending time with the cat, if the staff feel you can offer the right sort of home, we book for you to pick the cat up approx two days later. Before the cat goes home, we come and do a pre-check to ensure we are happy with the prospective new home. When all this is complete you adopt the cat. The paperwork is then completed, the cat is microchipped and the minimum donation should be paid.

At any stage of the adoption and for the rest of the cat's life we are always at the end of the telephone to offer support and help.

Please note we do carry out an after-adoption visit (between 6 months and 3 years after the adoption) to check owner and cat are still happy together.

If you do not have supplies of grey gravel cat litter, litter tray, food and a cat carrier, you can purchase these items from our supplies for a very reasonable donation. If adopting a kitten we recommend keeping the kitten on a good dried complete food to avoid tummy upsets and to give the kitten the best start you can. This can be purchased from us or any reputable pet shop.

AT PRESENT THE ADOPTION DONATION REQUESTED FOR A CAT OR KITTEN IS £50 THIS INCLUDES NEUTERING, TREATMENT FOR WORMS AND FLEAS, VACCINATIONS, MICROCHIP AND 6WKS FREE INSURANCE PLEASE CHECK AT RECEPTION TO CONFIRM THIS INFORMATION IS STILL CORRECT.

DOG/PUPPY ADOPTION PROCESS

- ?? Do you live within approximately 20 miles of our sanctuary in Scotforth, Lancaster?
- ?? Can you offer a safe, happy lifelong home to a dog?
- ?? Will you provide ongoing veterinary and training needs for a dog?

If you can answer yes to the above questions, you should visit our sanctuary any day (inc weekends) between 11am-3pm and have a look at our dogs

HOW TO ADOPT A DOG FROM ANIMAL CARE

Once you see a dog you think you may like to give a home to, you need to fill a questionnaire in. The questionnaire isn't a test, it is just to ensure we match the right owner to the right dog. Staff are available to help with this.

A member of staff will then talk to you about the dog and its needs and they will get the dog out to meet you if they feel it is a possible match for your lifestyle.

After meeting the dog, if you would like to carry on the adoption we need you to visit the dog again on three occasions as close together as possible (within a 7 day period if possible). After the second visit the dog is reserved to you.

Once you have completed three visits we will come to your home to check that any outdoor area is securely enclosed and see where the dog will sleep. This isn't to see if you have done your ironing or not! It is just to ensure the dog will be safe and happy in its new surroundings.

Then the good bit.....you take the dog home for a visit usually overnight. Day visits may be arranged but this is at the staff's discretion. If this visit goes well you then come in the day after, sign the paperwork and pay the minimum adoption fee to allow you to adopt the dog.

At any stage of the adoption and for the rest of the dog's life we are always at the end of the telephone to offer support and help.

Please note we do carry out an after-adoption visit (between 6 months - 3 years after the adoption) to check owner and dog are still happy together.

AT PRESENT THE ADOPTION DONATION REQUESTED FOR A DOG OVER 6 MONTHS OLD IS £85 & £100 FOR A DOG UNDER 6 MONTHS OLD THIS INCLUDES NEUTERING, TREATMENT FOR WORMS AND FLEAS, VACCINATIONS, MICROCHIP AND 6WKS FREE INSURANCE) PLEASE CHECK AT RECEPTION TO CONFIRM THIS INFORMATION IS STILL CORRECT.

OTHER ANIMAL ADOPTION PROCESS

- ?? Do you live within approximately 30 miles of our sanctuary in Scotforth, Lancaster?
- ?? Can you offer a safe, happy lifelong home to a Rabbit/ Ferret/ Guinea Pig/ Rodent ?
- ?? Will you provide ongoing veterinary care and enrichment (clean & dry hutch, things to do, proper food, daily handling)?

If you can answer yes to the above questions, you should visit our sanctuary any day (inc weekends) between 11am-3pm and have a look at our rabbits, ferrets, guinea pigs and rodents.

HOW TO ADOPT A SMALL ANIMAL FROM ANIMAL CARE

Once you see a Rabbit/ Ferret/ Guinea Pig/ Rodent you may like to give a home to, you need to fill a questionnaire in. The questionnaire isn't a test, it is just to ensure we match the right owner to the right pet. Staff are available to help with this. A member of staff will then talk to you about the animal and its needs and they will ask you to spend some time with it if they feel it is a possible match for your lifestyle.

After spending time with your possible future pet, if the staff feel you can offer the right type of home, they will book you to come back in a couple of days with either a photo of the housing you have for the animal or the actual cage. We will also carry out a pre-check on your home to ensure we are happy with the animal's new surroundings. Once this is all complete you can adopt the animal. The paperwork is then completed and the minimum donation should be paid.

At any stage of the adoption and for the rest of the animals life we are always at the end of the telephone to offer support and help.

Please note we do carry out an after-adoption visit to check owner and animal are still happy together.

Do you have a hutch, supply of food, hay, bedding, toys and a carrier? If not you can purchase these items from our supplies for a very reasonable donation.

AT PRESENT THE ADOPTION DONATION FOR VARIOUS TYPES OF SMALL ANIMALS ARE DIFFERENT SO PLEASE ASK AT RECEPTION FOR DETAILS.